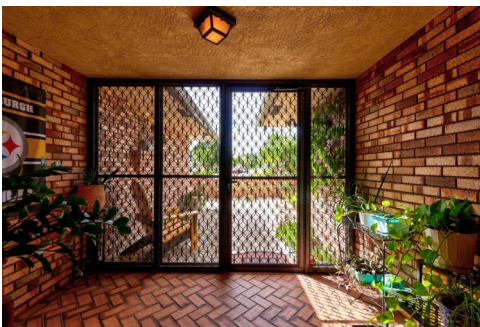


365 SE Verada Avenue
Port St. Lucie, FL 34983

PRICE \$799,000



Single Family



2750 SQFT



3 Beds



2 Baths



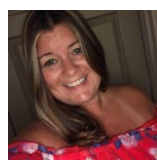
2 Car



0.33 Acre

PROPERTY DETAILS

Boaters and water lovers, we've got a great one for you! This OCEAN ACCESS, waterfront home has it all. Pool? Yes, there's even a poolside wood-burning fireplace! Dock? Sure thing! Upgraded seawall and almost 90' of water frontage. Boat Lift? Yup...9000 lb capacity. The perfect piece of Florida paradise. As you stroll up the walkway, you are greeted by a peaceful pond surrounded by a rock garden. Enter the foyer and you'll see the open living area with gas fireplace. The kitchen has massive counterspace, lots of cabinets, pantry, and a prep island in the middle. Gas stove too! Master bedroom has a giant closet...you can have a dance party in there! Updated master bath with dual vanities, garden tub and separate shower. Step out of master onto your own private patio. Take a dip in the pool or walk down to the canal and take a boat ride on the St Lucie River. Fenced yard to keep your family and furry friends safe. Located in the Floresta area of Port St Lucie, you're close to all of the shops and dining of St Lucie West, a quick ride to the beaches, and a short drive to I-95 and the Turnpike for commuters. I could go on and on, but just call and schedule your showing. Must be seen to truly appreciate the pride of ownership and all this home has to offer.



Tammy Eiseman
772-224-4522
teiseman@bellsouth.net

