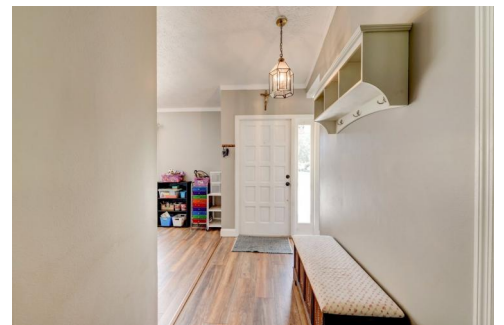


2269 SW Edison Circle
Port St. Lucie, FL 34953

MLS # RX-10897350
PRICE \$369,900



Single Family



1808 SQFT



4 Beds



2 Baths



2 Car



0.23 Acre

PROPERTY DETAILS

Beautiful 4 Bedroom, 2 Bathroom, 2 Car Garage CBS Home on Quiet Street. Updated Kitchen with Stainless Appliances, Corian Countertops with Breakfast Bar and Built In Dining Table. Updated Bathrooms, Recently Painted Interior, Wood Laminate Flooring Throughout, Pass Out Window Leading to Huge Screened Trussed Lanai with Fenced Yard and Eureka Palms For Privacy. AC 2021. Located Within Minutes to Floridas Turnpike and Shopping. Must See!



Leslie O'Reilly

772-528-8166

leslie@leslieoreilly.com

<https://www.teamoreilly.com>

