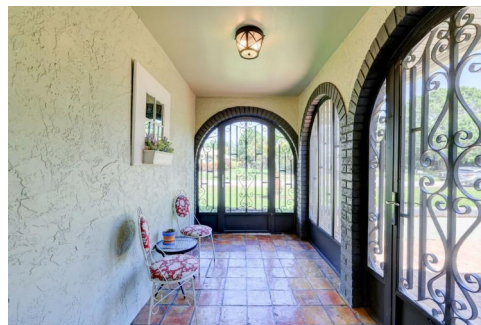
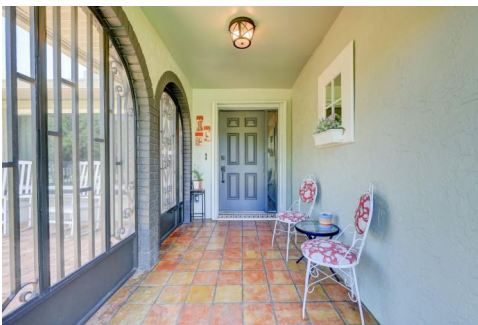


1962 Southeast Bolton Avenue
Port St. Lucie, FL 34952

PRICE \$609,900



Single Family



4042 SQFT



3 Beds



3 Baths



2 Car



0.44 Acre

PROPERTY DETAILS

LOCATION, LOCATION, LOCATION This .44 Acre Estate Pool Home is a hidden gem in a serene residential street. The home boasts a unique style and shows like a model! It is located in the most sought-after area of Sandpiper Bay. It features a welcoming covered entryway with adjacent front patio area to enjoy your outdoors morning breakfast, concrete block construction, an open floor plan, split floor plan, 3 large bedrooms plus den/office area, 3 full baths including a cabana bath, walk-in closets in all bedrooms, California closet in Master, incredible sized walk-in Pantry, Walk-in Linen closet, Oversized Laundry room, 24x24 diagonal tiles, water-proof luxury vinyl flooring in bedroom, impact windows, two impact sliders, newer roof, big kitchen island with breakfast bar, granite counter top, hood vent in kitchen, stainless steel appliances, soft close drawers, Kitchen pass through to pool deck area, sound proof wall in master bedroom, bathrooms have granite counter tops, lots of storage space, newer 2 zone a/c units, covered screened patio/pool area, public water, sprinkler system on well, oversized 2 car garage for a total of 616 sq ft plus extended driveway, huge backyard and side yards for entertaining, kids to play, gardening or pets to enjoy, plenty of room for Boat or RV. Just blocks from Morningside School, Shopping, Restaurants, Banks, US 1 and Short Drive to Beaches, Downtown Jensen Beach, Florida Turnpike and 1-95. The neighborhood location gives the feel of a gated community without the HOA. Too many features to list. This is a must see. Homes in this neighborhood do not last long.



Damaris Alamo
772-631-7887
marie@mariealamo.com

