

14610 86th Road North
Loxahatchee, FL 33470

COMMUNITY: Acerage

PRICE \$469,904

SPACIOUS & IMMACULATELY PRESENTED FAMILY HOME CENTERED ON 1.25 ACRES



Single Family



4 Beds

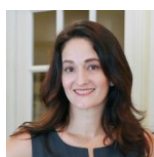


2 Baths

PROPERTY DETAILS

Spacious & Immaculately Presented Family Home. Entire home has been beautifully updated with high end finishes and fixtures. Stainless kitchen is a cooks dream, quartz counter tops, bright white soft-close maple cabinets, walk-in pantry, with reclaimed wood accent on breakfast bar. Stunning and durable bamboo hardwood floors and ceramic tile in the bathrooms & laundry room. Large master suite with covered patio access, 3 walk-in closets, 2 are his & hers with built-ins. Spacious, well-lit master bath with his & hers maple vanities in a bright white finish, quartz counter tops, new free standing soaking tub, separate toilet room with frosted glass door, walk-thru shower with block glass window. High and dry lot with plenty of room for a pool. Walking distance to highly rated elementary school. Located near Northlake Blvd. with access to I-95 and Beeline Hwy, nearby to grocery shopping and dining and parks.

ILLUSTRATED
PROPERTIES



Mary Miller
561-324-6175
medimarcomiller@gmail.com
<http://www.marymiller.net>

